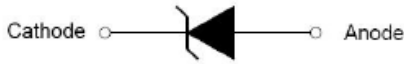
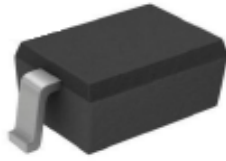


**SOD-323**



Marking: SJ

**Features**

- High Current Capability
- Low Forward Voltage Drop
- Halogen free and RoHS compliant

**Mechanical Data**

- SOD-323 Small Outline Plastic Package
- Polarity: Color band denotes cathode end
- Epoxy UL: 94V-0
- Mounting Position: Any

**Maximum Ratings & Thermal Characteristics**

(Ratings at 25°C ambient temperature unless otherwise specified.)

Parameters	Symbol	BAT60B-2	Unit
Maximum repetitive peak reverse voltage	VRRM	15	V
Maximum RMS voltage	VRMS	10	V
Maximum DC blocking voltage	VDC	15	V
Maximum average forward rectified current	IFM	3	A
Peak forward surge current 8.3 ms single half sine-wave	IFSM	9	A
Typical thermal resistance	ReJA	400	°C/W
Power Dissipation	PD	500	mW
Operating junction temperature	Tj	125	°C
Storage temperature range	TSTG	-50+150	°C

**Electrical Characteristics**

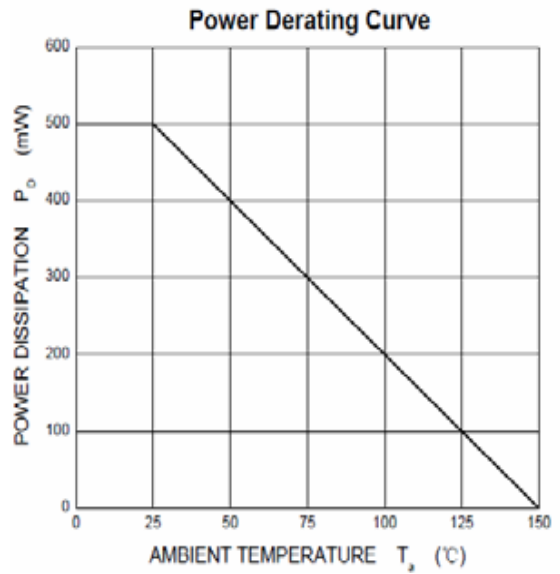
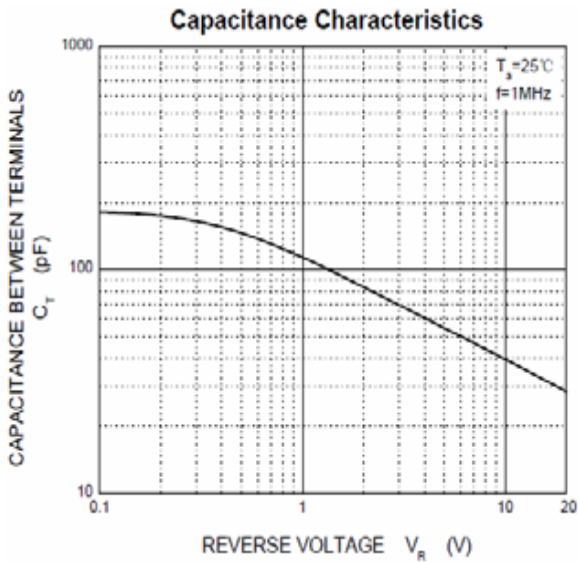
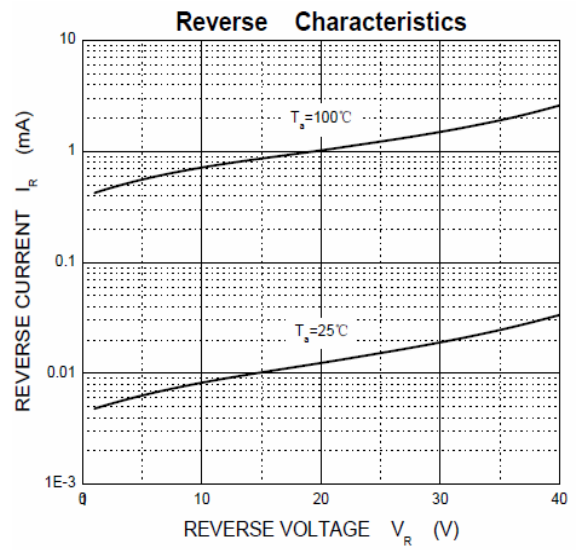
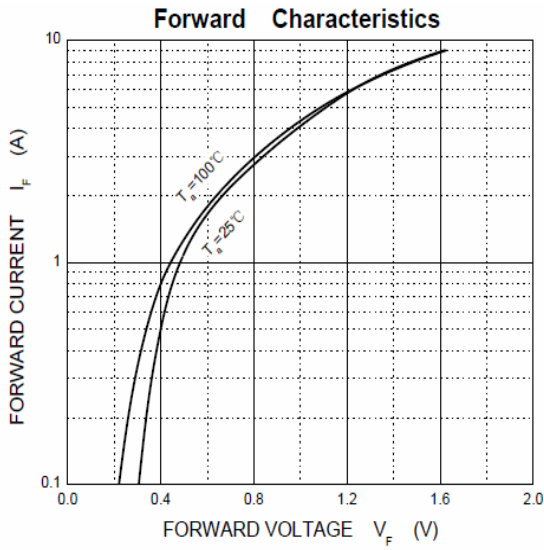
(Ratings at 25°C ambient temperature unless otherwise specified.)

Parameters	Symbol	Test conditions	BAT60B-2	Unit
Maximum forward voltage	VF	IF = 10mA	0.25	V
		IF = 100mA	0.30	
		IF = 500mA	0.40	
		IF = 1000mA	0.50	
Maximum reverse breakdown voltage	VR	IR=1mA	15	V
Maximum reverse current	IR	VR=15V	1.0	mA
Type junction capacitance	Cj	VR = 4.0V, f = 1MHz	120	pF

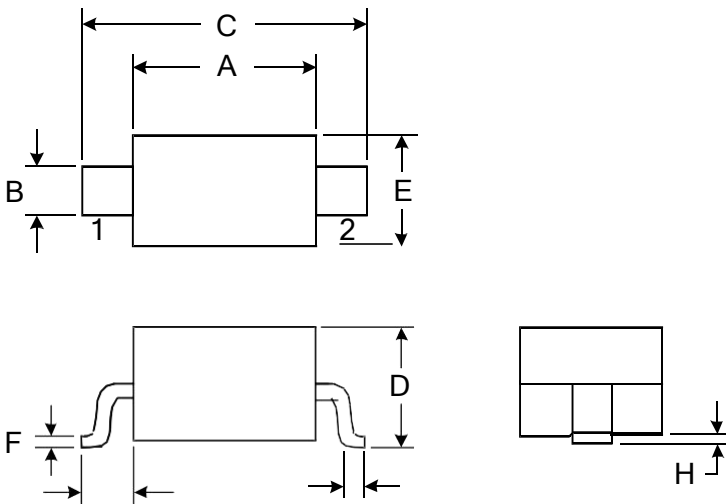
**Summary of Packing Options**

Package	Packing Description	Packing Quantity	Industry Standard
SOD-323	Tape/Reel,7" reel	3000	EIA-481-1

### Ratings and Characteristic Curves



### Package Outline Dimensions: SOD-323



DIMENSIONS				
SYMBOL	MILLIMETER		INCHES	
	MIN	MAX	MIN	MAX
A	1.600	1.800	0.063	0.071
B	0.250	0.350	0.010	0.014
C	2.500	2.700	0.098	0.106
D		1.000		0.039
E	1.200	1.400	0.047	0.055
F	0.080	0.150	0.003	0.006
L	0.500 REF		0.020REF	
L1	0.250	0.400	0.010	0.016
H	0.000	0.100	0.000	0.004